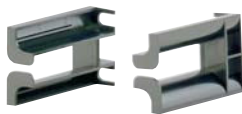


### Rack Mount Cable Management Accessories

- Bend radius control fingers support cables as they transition to the vertical pathway
- Finger spacing aligns with rack units
- Attach to patch panels or equipment mounting screws
- Lightweight plastic construction provides durability and easy installation



CMBRC1



CMBRC5E

Part Number	Part Description	No. of Rack Spaces <sup>^</sup>	Std. Ctn. Qty.
<b>CMBRC1</b>	Kit of two bend radius control fingers; for use with patch panels. Maintains 1/2" bend radius control. Dimensions: 1.7"H x .8" W x 3.0"D (44mm x 19mm x 77mm).	1	10
<b>CMBRC1E</b>	Kit of two bend radius control fingers, for use with patch panels. Maintains 1/2" bend radius control. Dimensions: 1.7"H x 1.0"W x 5.1"D (44mm x 25mm x 129mm).	1	10
<b>CMBRC5</b>	One-piece unit with five bend radius control fingers; for use with active equipment. Maintains 1/4" bend radius control. Dimensions: 8.7"H x 1.0"W x 3.3"D (222mm x 26mm x 84mm).	5	10
<b>CMBRC5E</b>	One-piece unit with five bend radius control fingers; for use with active equipment. Maintains 1/4" bend radius control. Dimensions: 8.7"H x 1.0"W x 5.1"D (222mm x 26mm x 129mm).	5	10

<sup>^</sup>One rack space = 1.75" (44.45mm).  
All product color is black.

### Hinged Wall Brackets

- Mount to wall or standard EIA 19" rack
- Cable tie slots
- Standard 19" EIA hole spacing
- Panel rotates from one side for easy access to cabling
- Include write-on labeling area
- Accept 19" patch panels, horizontal managers, and equipment



WBH1



WBH2



WBH3



WBH4



WBH4E

Part Number	Part Description	No. of Rack Spaces <sup>^</sup>	Std. Pkg. Qty.
<b>6" Deep Wall Brackets</b>			
<b>WBH1</b>	Dimensions: 1.8"H x 20.2"W x 6.3"D (44mm x 513mm x 159mm). Load rating 10 lbs.	1	1
<b>WBH2</b>	Dimensions: 3.5"H x 20.2"W x 6.3"D (89mm x 513mm x 159mm). Load rating 20 lbs.	2	1
<b>WBH3</b>	Dimensions: 5.3"H x 20.2"W x 6.3"D (133mm x 513mm x 159mm). Load rating 30 lbs.	3	1
<b>WBH4</b>	Dimensions: 7.0"H x 20.2"W x 6.3"D (178mm x 513mm x 159mm). Load rating 40 lbs.	4	1

#### 15" Deep Wall Brackets

<b>WBH2E</b>	Dimensions: 3.5"H x 20.4"W x 15.8"D (89mm x 519mm x 402mm). Load rating 20 lbs.	2	1
<b>WBH4E</b>	Dimensions: 7.0"H x 20.4"W x 15.8"D (177mm x 519mm x 402mm). Load rating 40 lbs.	4	1
<b>WBH6E</b>	Dimensions: 10.5"H x 20.4"W x 15.8"D (267mm x 519mm x 402mm). Load rating 60 lbs.	6	1

<sup>^</sup>One rack space = 1.75" (44.45mm).  
All product color is black.

# Mouser Electronics

Authorized Distributor

Click to View Pricing, Inventory, Delivery & Lifecycle Information:

Panduit:

[WBH4E](#) [WBH1](#) [WBH2](#) [WBH3](#) [WBH4](#) [WBH2E](#) [WBH6E](#)